

HISTORIC GIFT.
INSPIRING STORIES.

BUILD EXTRAORDINARY AT ST. JOE'S.

Annual Donor Impact Report 2024-2025

BECAUSE OF YOU... EXTRAORDINARY IS HAPPENING AT ST. JOE'S.

Thank you for making the best care experiences possible at St. Joseph's Health Centre.

Because of your generosity—and the support of our extraordinary donor community—we've made meaningful improvements in care this year, which we are excited to share with you in this report. You are part of something truly extraordinary, and your generosity has a lasting impact on patients and their families who turn to our team of health professionals throughout their lifetime.

WITH YOUR SUPPORT, AND A HISTORIC GIFT FROM PETER GILGAN, EXTRAORDINARY IS HAPPENING AT ST. JOE'S.

Inspired by the incredible changes happening at St. Joe's, thanks to donors like you, Peter has made a historic \$60 million investment in St. Joe's—the largest in our hospital's history. This gift builds on the momentum of your support that fuels the extraordinary care

happening here, and will shape the future of care for our community.

Here are just a few examples of the inspiring changes that your donations made possible this past year:

YOU TRANSFORMED OUR EMERGENCY DEPARTMENT.

Before donors enabled our emergency department expansion, our emergency team was seeing more than 100,000 visits each year, in a space built for 60,000. Now, our community comes for emergency care in a 40% larger space with specialized care zones.

OUR HEALTHCARE TEAMS ACROSS ST. JOE'S HAVE ACCESS TO THE LATEST EQUIPMENT, EVERYTHING FROM MONITORS TO SURGICAL TOOLS AND SPECIALIZED IMAGING TECHNOLOGY FOR OUR TINIEST PATIENTS.

Tax dollars do not cover most new renovations or the purchase of replacement equipment. We can only build St. Joe's for the future with the support of donors like you and visionary philanthropists who care about creating healthy communities.

You help make change possible, and you will read even more about your impact in the pages ahead.

Thank you for driving the momentum that is shaping the future of St. Joe's—combining innovation with compassion to meet the unique health needs of this community.

MARIA DYCK
PRESIDENT AND CEO,
ST. JOSEPH'S HEALTH CENTRE FOUNDATION

DIANE KAZARIAN
CHAIR, BOARD OF DIRECTORS
ST. JOSEPH'S HEALTH CENTRE FOUNDATION

THANK YOU DR. TIM RUTLEDGE, WELCOME ALTAF STATIONWALA.



We are delighted to welcome Altaf Stationwala as the new President and CEO of Unity Health Toronto, starting on July 1. As CEO, Altaf will work closely with our Foundation, board, and donors, to continue building an extraordinary St. Joe's. We are pleased to share this message from Altaf with you:

"I am deeply grateful for the unwavering support of St. Joe's Foundation and the generous donors who make transformative advancements in patient care, research, and innovation possible."

As we welcome new leadership, we also extend our deep gratitude to Dr. Tim Rutledge, who is retiring as the inaugural President and CEO of Unity Health Toronto. Over the past several years, Tim has guided the organization through significant transformation, and his unwavering commitment to Unity Health's mission has been a cornerstone of our success.

BUILD EXTRAORDINARY: PETER GILGAN'S HISTORIC \$60 MILLION INVESTMENT IS HELPING BUILD A NEW ST. JOE'S.



Peter Gilgan's roots run deep in Toronto's west end. It's where he and his six siblings were born, here at St. Joe's, and where they spent their early years. Paying tribute to his parents and his childhood in the west end, in 2017 he made a \$10 million donation to our Promise Campaign, supporting care for the half-a-million people in our community who rely on St. Joe's for care. Now, he's helping shape its future with the largest donation in the hospital's history:

A HISTORIC \$60 MILLION INVESTMENT TO POWER A BOLD TRANSFORMATION IN CARE.

Mr. Gilgan, President of Mattamy Homes, shared that the investment is deeply personal to him. With a strong connection to West Toronto, he expressed pride in supporting the transformation of St. Joe's so the hospital can continue caring for families like his for the next century.

As a builder, Mr. Gilgan knows that extraordinary things begin with a strong foundation. Inspired by the momentum created by thousands of do-

nors who believe in what's possible at St. Joe's, his visionary investment is helping build more than a hospital— it's building a future. One that will transform care for generations and set a new standard for what community health can be.

That transformation is already underway at St. Joe's. At its heart is a new, state-of-the-art patient tower that will redefine how care is delivered in our community. Purpose-built to meet the growing and changing needs of the west end, the new tower will improve emergency and surgical care, expand mental health services, and provide space for innovation in areas like AI—strengthening our ability to care for everyone who comes through our doors—now and into the future.

IT'S AN EXCITING MILESTONE—ONE THAT MARKS A TURNING POINT IN OUR HISTORY AND A BOLD STEP FORWARD FOR EVERY DONOR, EVERY PATIENT, AND EVERY NEIGHBOUR WHO BELIEVES THAT WEST TORONTO DESERVES NOTHING LESS THAN EXTRAORDINARY.

YELLOW ZONE
AMBULATORY CARE



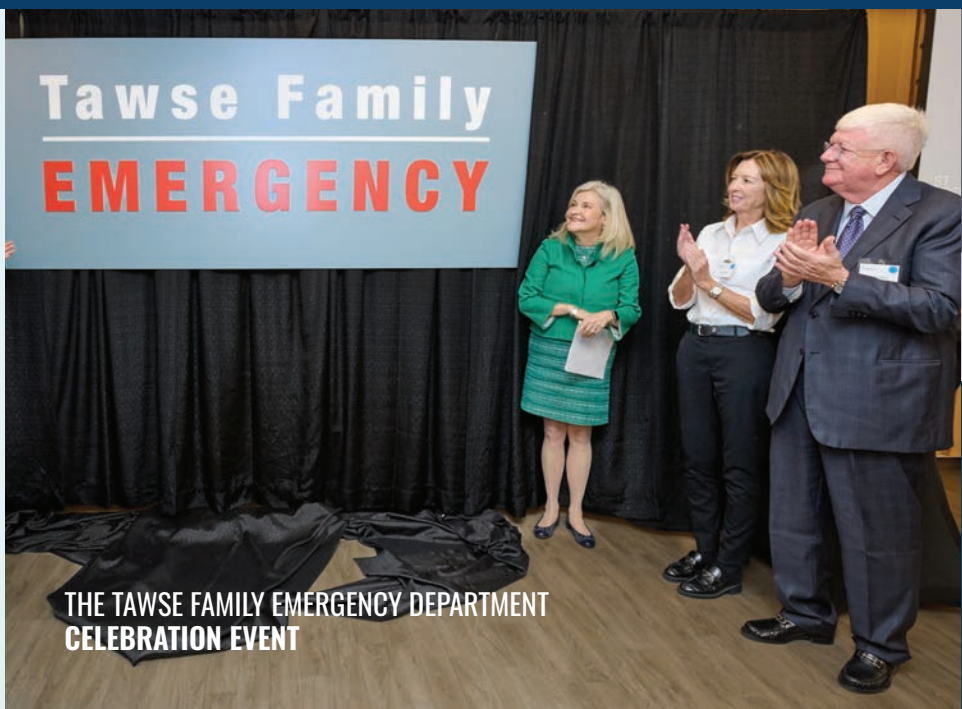
BUILT BY YOU, FOR YOU:

A BIGGER, BETTER TAWSE FAMILY EMERGENCY DEPARTMENT

YOUR DONATIONS TRANSFORMED EMERGENCY CARE AT ST. JOE'S.

This milestone project was **100% donor-funded** and took place over multiple stages to keep the doors open during renovations.

GET A BEHIND-THE-SCENES LOOK AT WHAT YOU
MADE POSSIBLE AT [SUPPORTSTJOES.CA/IMPACT](https://supportstjoes.ca/impact)



THE TAWSE FAMILY EMERGENCY DEPARTMENT
CELEBRATION EVENT

YOU DIDN'T JUST EXPAND AN EMERGENCY DEPARTMENT. YOU TRANSFORMED EMERGENCY CARE.

With your support, **St. Joe's** became one of the only hospitals with zones tailored for different needs—from our Rainbow Zone for kids to dedicated spaces for mental health and geriatric care.


With **40% more space and specialized care zones**, our bigger and better Tawse Family Emergency Department gives healthcare teams the spaces they need to meet the unique needs of all our patients.

MHESU **MENTAL HEALTH EMERGENCY SERVICES UNIT**
YELLOW ZONE **AMBULATORY CARE**
RED ZONE **RESUSCITATION CENTRE**
ORANGE ZONE **ACUTE INTERNAL MEDICINE (AIM) CLINIC**
BLUE ZONE **MAIN EMERGENCY**
GREEN ZONE **GERIATRIC EMERGENCY**
RAINBOW ZONE **CHILDREN'S EMERGENCY**



THANK YOU TO EVERY DONOR WHO HELPED TRANSFORM EMERGENCY CARE HERE AT ST. JOE'S.

BECAUSE OF YOU, THE TAWSE FAMILY EMERGENCY DEPARTMENT IS **NOW COMPLETE**, MARKING AN EXTRAORDINARY MILESTONE FOR HEALTHCARE IN THIS COMMUNITY.



“St. Joe’s gave me
my life back, and now
I want to help them
do the same for others.
I’m living proof of the
difference donors
make.”

- DOUG WILSON

Doug Wilson couldn’t catch his breath and felt like he was losing control of his life until he was treated for a serious chest infection.

NEW GREEN ZONE— THE BARRETT FAMILY FOUNDATION GERIATRIC EMERGENCY CARE ZONE— TRANSFORMS EMERGENCY CARE FOR SENIORS



It has been very exciting to be a part of the opening of our Barrett Family Foundation Geriatric Emergency Care Zone, known as the Green Zone, in the Tawse Family Emergency Department.

Hospitals can be confusing places, and anyone is at risk of getting lost—but some of our older patients are at significantly increased risk. The Green Zone is a closed space where exits are clearly visible by staff, significantly decreasing the risk of wandering or getting turned around.

The space also has health care aids, like anti-slip flooring and hand-rails, to help patients with basic tasks like getting to the bathroom. The bathroom itself was designed with the help of our own Emergency Department Occupational Therapists, to maximize independence and safety for our patients.

While these things may seem small, they go a long way to ensuring comfort and assurance for our older patients.

We are continuing to learn and to enhance the space with additional resources—working with our hospital volunteers and Patient Experience team to collect feedback from our patients and their loved ones and caregivers who spend time in the Green Zone.

We are incredibly appreciative of the support and encouragement that we have received from donors, colleagues, and the St. Joe's community. We're looking forward to our next chapter and best supporting our community as our population ages!

Dr. Courtney Spelliscy
Dedicated Emergency Physician



Extraordinary donors support enabled us to add The Barrett Family Foundation Geriatric Emergency Care Zone to our expansion plans. Now, St. Joe's has a dedicated space in the Tawse Family Emergency Department for older adults—

**AMONG THE FIRST OF
ITS KIND IN CANADA.**

THIS MILESTONE PROJECT WAS **100% DONOR-FUNDED.**

READ MORE ABOUT THIS SPECIALIZED ZONE THAT DONORS MADE POSSIBLE AT: [SUPPORTSTJOES.CA/IMPACT](https://supportstjoes.ca/impact)

NEW TECHNOLOGY AND EQUIPMENT— IT'S ALL HERE, THANKS TO YOU

It would take pages to show you the impact of the many pieces of equipment donors like you brought to St. Joe's this year. Here are just a few examples.

Equipment to care for our tiniest patients

With your support, the Neonatal ICU has new tools to monitor our youngest patients. Nurses are using a small, portable tool called a Venoscope that has LED lights to illuminate small veins without risk to the baby.

They also have new transcutaneous monitors to continually measure oxygen and carbon dioxide levels in the blood, infant scales to measure small weight changes, and two new Panda Warmers to help regulate body temperature in newborns without obstructing medical access or visibility.

These specialized tools all provide vital information to guide care and treatment plans.

New table for orthopedic procedures

Thanks to everyone who rode or supported our Cycle 4 St. Joe's event, and a generous donor, our orthopedic team has a specialized table to help them better position patients comfortably and safely for a variety of surgical procedures.

WHERE YOUR DONATIONS GO.

Extraordinary happens here because of your generosity. Your donations support patient care throughout St. Joe's—and it's only with you that we can provide the best possible experiences. Our team at the Foundation remains committed to putting your gifts into action.

Here's how donations from you and others have helped meet the needs across various areas at St. Joe's this past year:



Emergency Care	7%
Endowment Funds	1%
General	6%
Labs, Medicine & Diagnostic Imaging	8%
Mental Health & Addictions	6%
Senior's Health & Ambulatory Care	17%
Women & Children's Health	2%
Surgery, Ambulatory Care Clinic & Orthopedics	49%
Rehabilitation & Palliative Care	4%

FOR MORE INFORMATION AND TO SEE OUR FINANCIAL STATEMENTS, PLEASE VISIT [SUPPORTSTJOES.CA/IMPACT](https://supportstjoes.ca/impact)

A photograph of a man and a woman smiling and holding their newborn baby. The man is on the left, looking down at the baby. The woman is in the center, looking at the camera. The baby is lying in her arms, looking towards the camera. They are all wearing white clothing. The background is a soft, out-of-focus indoor setting.

A NEW BEGINNING FOR JENNA & FAMILY

“I give to this hospital because I have seen several times the difference donations make in creating spaces for the care people need at the time.”

You may remember Jenna. Last year, she shared how donors helped her receive compassionate, life-saving care at St. Joe's—not just once, but multiple times.

Through a devastating miscarriage that brought Jenna to St. Joe's Tawse Family Emergency Department—and later, a life-saving surgery for appendicitis while 19 weeks pregnant—St. Joe's was always there for her. Thanks to donors like you, our Emergency Department team had the spaces and equipment to save Jenna's life.

Donors were there for Jenna and her family as they started a new chapter, and Jenna is thrilled to share that their new baby boy, Lorenzo, was born at St. Joe's in early February.

“We are so grateful to donors and everyone at St. Joe's for taking care of our new family. I've always felt cared for here, and this experience is one I'll always remember,” says Jenna.

Read more about Jenna's experience at St. Joe's at supportstjoes.ca/impact

YOU ARE PART OF AN EXTRAORDINARY COMMUNITY

6,600+ DONORS
2,300+ NEW DONORS
10+ COMMUNITY EVENTS



The **2024 Cycle 4 St. Joe's** was another epic ride for 320 riders, **raising more than \$500,000 to support urgent hospital needs** thanks to several teams, sponsors, and donors.



The **2024 Fall Classic Golf Tournament** brought 144 golfers to Lambton Golf and Country Club and **raised over \$440,000 for St. Joe's—our best result yet!** Thank you to everyone who joined us on the links and to our presenting sponsor Chart Construction and premium sponsor Roadsport Auto Group.

A LIFE CHANGED. A LEGACY GIFTED.

Carolyn Watt was in crippling agony until she came to St. Joe's. Doctors quickly diagnosed Carolyn with a rare infection in her back. "If not for St. Joe's, I could be paralyzed today." Now she is a member of our St. Joe's Society, a special group of people who have chosen to leave a legacy gift to St. Joe's in their will.



"I want to support the hospital that got me on my feet again."

Like Carolyn, many in our community are sending their generosity forward to support a healthier and more compassionate future for our entire community.



LEARN MORE ABOUT THE ST. JOE'S SOCIETY
AND HOW YOU CAN MAKE A LASTING IMPACT.

VISIT [SUPPORTSTJOES.CA/STJOESSOCIETY](https://supportstjoes.ca/stjoessociety)

TO LEARN ABOUT UPCOMING EVENTS, PLEASE VISIT [SUPPORTSTJOES.CA/IMPACT](https://supportstjoes.ca/impact)

AN EXTRAORDINARY GIFT FOR EXTRAORDINARY CARE

“St. Joe’s is more than a community hospital to us,” says Rayla Myhal, reflecting on her and her husband George’s connection to St. Joe’s. “This is where our daughter was born.” Rayla’s history with St. Joe’s goes even further back, to 30 years ago when she was a student nurse in the old labour and delivery department. “The facilities were modest, but the care provided by the incredible staff was exceptional,” she says.

Long-time west-end residents, the Myhals’ commitment to St. Joe’s extends beyond their giving. George served on St. Joe’s Promise Campaign Cabinet, which raised over \$100 million, and Rayla joined the Foundation Board in 2023. They are also enthusiastic participants and lead fundraising efforts for Cycle 4 St. Joe’s.

This past year, they made an **extraordinary \$10 million matching gift**—that will double with support from other generous donors to transform care in the west-end.



“St. Joe’s is a cornerstone of this community, but its facilities have reached capacity. It’s time to create new spaces that reflect the extraordinary care happening inside,” says Rayla. “George and I want to inspire the community to give generously.”

FOR THE LOVE OF CHEESE... AND ST. JOE’S



“St. Joe’s has always been there for us when we needed it—good times and bad—so we are happy to help.”

Since 1970, the Pristine family’s Cheese Boutique has been a beloved west-end landmark—just around the corner from St. Joe’s.

“Our grandfather and father taught us everything we know,” says Afrim Pristine, who now serves on St. Joe’s Foundation Board—including the importance of giving back.

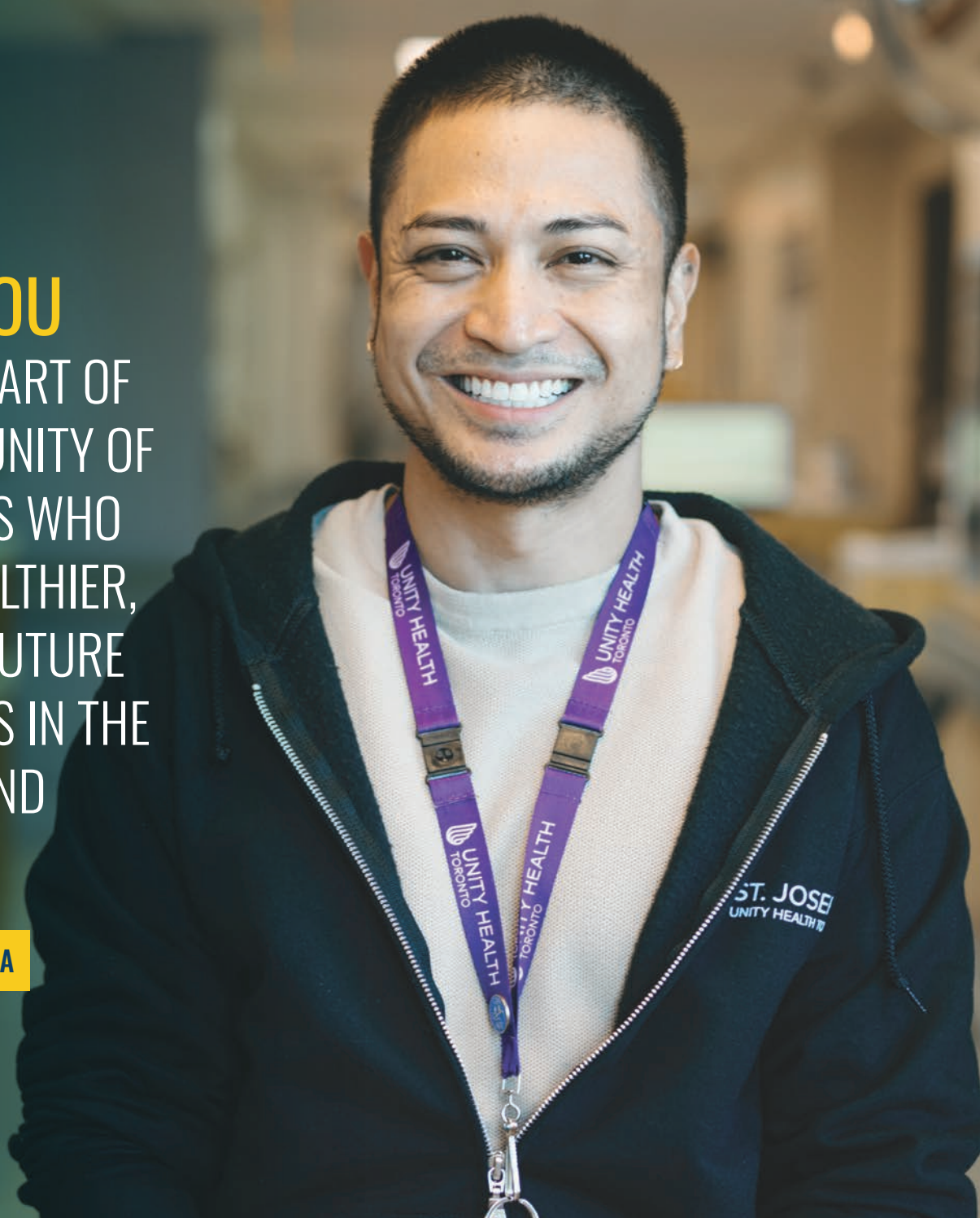
“We started the Cheese Boutique Mental Health Fund to help support care for people in our community,” says Afrim. Their annual spring fundraiser, held for the past 7 years, donates 100% of proceeds to St. Joe’s. This past year, they generously pledged \$1 million to support mental health care.

FOR MORE STORIES OF IMPACT AND OUR FULL FINANCIAL REPORT, VISIT [SUPPORTSTJOES.CA](https://supportstjoes.ca)

THANK YOU

FOR BEING PART OF
OUR COMMUNITY OF
SUPPORTERS WHO
BUILD A HEALTHIER,
BRIGHTER FUTURE
FOR FAMILIES IN THE
WEST END AND
BEYOND.

[SUPPORTSTJOES.CA](https://supportstjoes.ca)



YOU BUILD EXTRAORDINARY AT ST. JOE'S.

It is easy to see the generosity of donors like you throughout St. Joe's. If you are coming for care or to visit, be sure to visit the Melnyk Lobby to see our donor wall. This growing list of supporters reflects the generosity of our community in transforming patient care.

You can also explore this list on our website at supportstjoes.ca/about/donor-wall